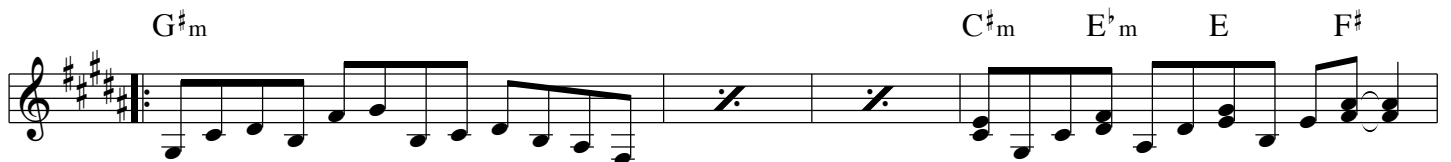
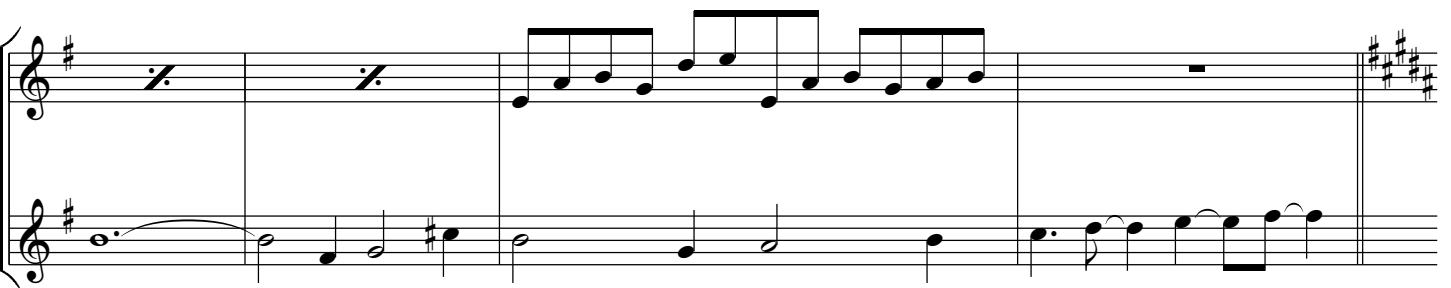
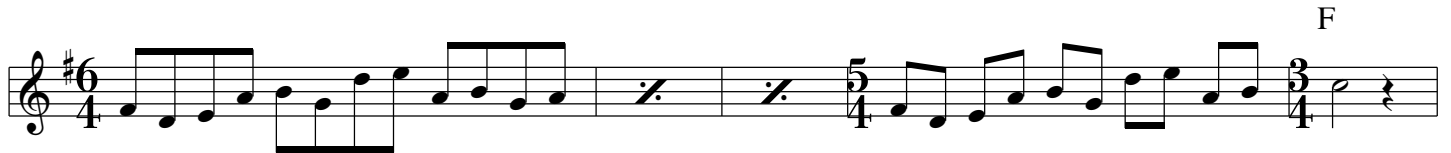


13 Rediscovery, Pt. 2



G D/F# Em

Strings

A C Bm

Am Bsus 4 B

1. Em

2. Em

Gm

System 1: Treble and Bass clefs. Treble clef has a melodic line with notes G4, A4, B4, C5, B4, A4, G4. Bass clef has a string accompaniment with notes G2, B1, D2, E2, G2, B1, D2, E2. A box labeled "Strings" is in the bass clef. Time signatures change from 6/4 to 5/4 and back to 6/4.

System 2: Treble and Bass clefs. Treble clef continues the melodic line. Bass clef has a string accompaniment with notes G2, B1, D2, E2, G2, B1, D2, E2. Time signatures change from 6/4 to 5/4 and back to 6/4.

System 3: Treble clef. Chord "Em" is indicated above the first measure. The melodic line starts with a whole note E4, followed by eighth notes. A double bar line with repeat slashes is in the middle. Time signature is 4/4.

System 4: Treble clef. Chord "F#m" is indicated above the first measure. The melodic line continues with eighth notes. Time signature is 4/4.

System 5: Treble and Bass clefs. Treble clef continues the melodic line. Bass clef has a string accompaniment with notes G2, B1, D2, E2, G2, B1, D2, E2. A box labeled "Strings" is in the bass clef. Time signature is 4/4.

System 6: Treble and Bass clefs. Treble clef continues the melodic line. Bass clef has a string accompaniment with notes G2, B1, D2, E2, G2, B1, D2, E2. Time signature is 4/4.

Musical notation system 1. Treble clef, key signature of three sharps (F#, C#, G#). Time signature 5/4. Chords: F#m, Am, B, D.

Musical notation system 2. Treble clef, key signature of three sharps. Time signature 5/4. Chords: F#/C, A/C#.

Musical notation system 3. Treble clef, key signature of three sharps. Time signature 5/4. Chords: Db, Db7/B.

Musical notation system 4. Treble clef, key signature of three sharps. Time signature 5/4. Chords: ma7, Aug.

Musical notation system 5. Treble clef, key signature of three sharps. Time signature 5/4. Chords: Fm, C#m/E, Fm, C#m/E.

Musical notation system 6. Bass clef, key signature of three sharps. Time signature 6/4. Chords: Fm, C#m/E, Fm, C#m/E.

Musical notation system 7. Bass clef, key signature of three sharps. Time signature 6/4. Chords: Fm, C#m/E, Fm, C#m/E.

Fm C[#]m/E Fm C[#]m/E

Choir F[#]m Dm F[#]m Dm F[#]m Dm F[#]m Dm

Piano Gm E^bm/F[#]

Gm E^bm F5 F

B^bm Fsus4 F

Cm Gsus4 G

Gm C⁷/E Fm F⁷m/E D^bma7

Fm/C C Dsus4 D

Gm

Vocal melody in G minor, 6/4 time signature. The piece features several 5/4 and 6/4 time signature changes. The melody consists of eighth and quarter notes, with some dotted rhythms. The key signature has two flats (Bb and Eb).

Piano

Piano accompaniment in G minor, 6/4 time signature. The accompaniment features a steady eighth-note bass line and a more active treble line with eighth and quarter notes. It includes 5/4 and 6/4 time signature changes. The key signature has two flats (Bb and Eb).

Organ

Organ accompaniment with chord symbols: Dm, Ddim, Bb/D, Dm, Dm, Ddim, Bb#9/D, A/C#, Dm. The organ part consists of sustained chords in the treble clef, with some moving bass notes. The key signature has two flats (Bb and Eb).

Strings Bm Gm Bm Bdim

Bm Gm Bm Dm

Piano Fm

Organ Dm Ddim B^b/D Dm

Strings Bm Gm Bm Bdim

Strings Bm Gm Bm Dm

Strings Fm C#m Fm Fdim

Piano Fm C#m Fm G#m

Em

Musical staff with treble clef, 4/4 time signature, and a whole note chord Em.

Gm

Musical staff with treble clef, 4/4 time signature, and a whole note chord Gm.

Lead

Gm/B^b

Musical staff with treble clef, 4/4 time signature, and a lead line for Gm/B^b.

Musical staff with treble clef, 4/4 time signature, featuring triplets.

Musical staff with treble clef, 4/4 time signature, featuring eighth notes.

Strings

F[#]m/A

Musical staff with treble clef, 4/4 time signature, and a whole note chord F[#]m/A.

Lead

Am/C₃

Musical staff with treble clef, 4/4 time signature, and a lead line for Am/C₃.

Musical staff with treble clef, 4/4 time signature, featuring eighth notes.

Musical staff with treble clef, 4/4 time signature, featuring eighth notes.

Musical staff with treble clef, 4/4 time signature, featuring a whole note chord.

Musical staff with treble clef, 2/4 time signature, featuring eighth notes.

Musical staff with treble clef, 2/4 time signature, featuring eighth notes.

Musical staff with treble clef, 2/4 time signature, featuring eighth notes.

Musical staff with treble clef and a melodic line of eighth notes.

Musical staff with bass clef and a melodic line of eighth notes, featuring triplets.

Piano accompaniment for the first system, showing a grand staff with treble and bass clefs. The bass line is active, while the treble line is mostly silent.

Musical staff with bass clef and a melodic line of eighth notes.

Musical staff with treble clef and a melodic line of eighth notes, marked "Bell".

Musical staff with treble clef and a melodic line of eighth notes.

Musical staff with treble clef and a melodic line of eighth notes.

Musical staff with treble clef and a melodic line of eighth notes.

Musical staff with treble clef, marked "Piano E^b m", and a melodic line of eighth notes. Time signature changes from 6/4 to 5/4.

Musical staff with treble clef and a melodic line of eighth notes. Time signature changes from 6/4 to 5/4.

Musical staff with treble clef and a melodic line of eighth notes. Time signature changes from 6/4 to 7/4.

G[#]m F[#]

Strings

B^bm/F E E^bm

G[#]m F[#] B^bm/F E E^bm G[#]m F[#] B^bm/F E E^bm G[#]m F[#] B^bm/F E E^bm

E G

B^b D^b

Csus 4 A^b/C

Strings F G Gm Dm

Plano

Bm C E^b_m⁶/F[#] D^b E^b

Musical notation for the first system, measures 1-4. Treble clef, 4/4 time. Bass clef, 4/4 time. Chords: Bm, C, E^b_m⁶/F[#], D^b, E^b.

F G Gm Dm

Musical notation for the second system, measures 5-8. Treble clef, 3/4 time. Bass clef, 3/4 time. Chords: F, G, Gm, Dm.

Bm C E^b_m⁶/F[#] D^b

Musical notation for the third system, measures 9-12. Treble clef, 4/4 time. Bass clef, 4/4 time. Chords: Bm, C, E^b_m⁶/F[#], D^b.

E^b F⁷/E^b E^b_m⁷ A^b/E^b

Musical notation for the fourth system, measures 13-16. Treble clef, 4/4 time. Bass clef, 4/4 time. Chords: E^b, F⁷/E^b, E^b_m⁷, A^b/E^b.

C

Musical notation for the fifth system, measures 17-20. Treble clef, 2/4 time. Bass clef, 2/4 time. Chord: C.

Musical notation for the sixth system, measures 21-22. Treble clef, 4/4 time. Bass clef, 4/4 time.